



AQUARIUS

General Information

| | |
|----------------|---|
| Vessel Name | Aquarius |
| Type | Harbour Tug |
| Classification | Bureau Veritas I \square HULL \bullet MACH Tug (Bollard pull = 70 t) Unrestricted Navigation AUT UMS Inwater Survey COMF-NOISE 3, COMF-VIB 3 Fire Fighting Ship 1 with water spray For vessels with a sailing time <4 h from a safe sheltered anchorage |
| IMO Number | 9993195 |
| Year Built | 2024 - Vietnam |
| Flag | Sri Lanka |
| Call Sign | |

Dimensions

| | |
|-------------------|----------|
| Length Overall | 22.81m |
| Beam Overall | 12.03m |
| Depth at Sides | 4.30m |
| Draught aft | 5.60m |
| Displacement | 491 tons |
| (98% consumables) | |

Tank Capacity

| | |
|----------------------|--------------------|
| Fuel Oil (Incl. Long | 79.6m ³ |
| Range Tanks | |
| Fuel Oils | 51.2m ³ |
| Fresh Water | 8.00m ³ |
| Sewage | 5.10m ³ |
| Dirty Oil | 1.50m ³ |
| Lubrication Oil | 1.50m ³ |
| Bilge Wter | 3.00m ³ |
| Foam | 6.10m ³ |

Performance

| | |
|--------------|------------|
| Bollard Pull | 70 tons |
| Bollard Pull | 64 tons |
| Speed | 12.5 knots |

Propulsion System

| | |
|------------------------|--|
| Main Engines | 2x Caterpillar 3512C TA HD/D |
| Total Power | 3804 bkW (5102 bhp) at 1800 rpm |
| Azimuth thrusters | Kongsberg Maritime US 205S |
| Clutches (on-off type) | Kongsberg Maritime 'built in' type or equal |
| Propeller Diameter | 2800 mm |
| Forced Ventilation | 60.750 m ³ /h |
| IMO Tier III | Vessel is prepared for installation of an optionally available Class approved Selective Catalytic Reduction system |

Deck Equipment

| | |
|--------------|--|
| Anchor | 1x 360 kg Pool (High Holding Power) |
| Anchor winch | 10 m/min |
| Towing Winch | Hydraulically driven double drum, pull 35t up to 10 m/min and maximum speed up to 40 m/min on second layer, 175 ton brake on 2nd layer Electrically driven, 5 ton at 16 m/min |
| Capstan | D-fender at sides, cylindrical fender at transom corners, cylindrical and W-block bow fender and 6 heavy fender tyres are fitted on the fore ship |
| Fendering | |

Navigation Equipment

| | |
|-----------------------|-------------------------------------|
| Searchlights | 2x Norselight SH470 2000 W |
| Radar System | Furuno FAR 1518-BB |
| ECS | MaxSea TZ Professional |
| Compass | Cassens & Plath Reflecta 11 |
| Satellite Compass/GPS | Simrad GN70/HS80A |
| Autopilot | Simrad AP-70 |
| Echosounder | Furuno FCV-628 |
| VHF Radio Telephone | 2x Cobham Sailor 7222, one with DSC |
| VHF Portable (GMDSS) | 2x Sailor SP3540 |
| Navtex | Furuno NX-700B |
| AIS | Furuno FA-170 |
| EPIRB | Jotron Tron-60AIS |
| SART | Jotron Tron AIS |
| Remote Monitoring | Ready for Damen Triton |
| Anemometer | Gill Instruments GMX 500 |

Auxiliary Equipment

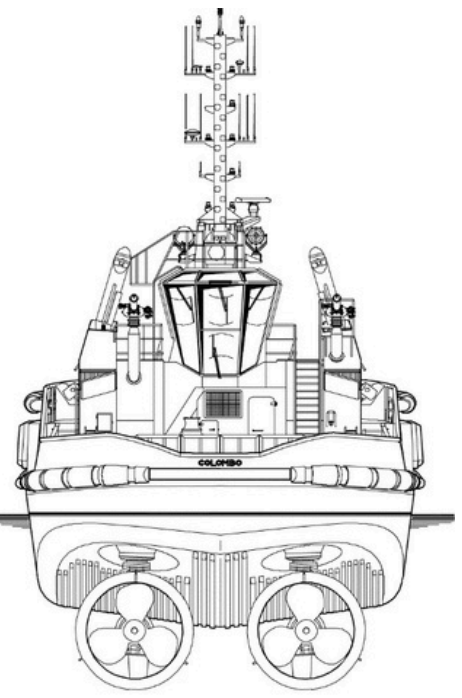
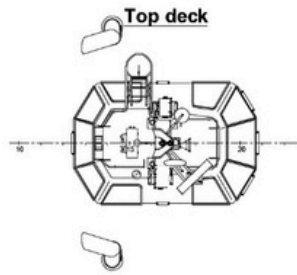
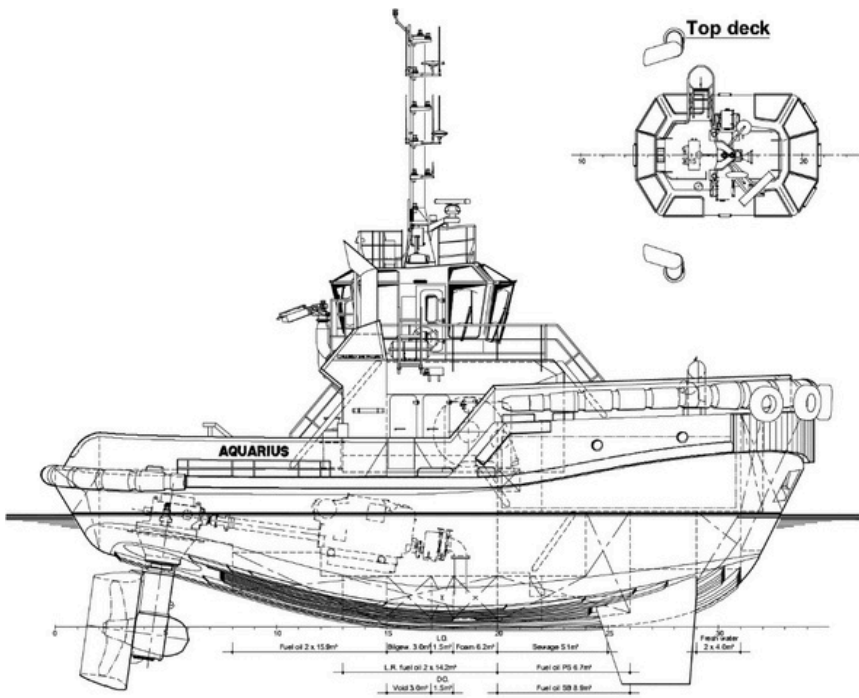
| | |
|-----------------------|--|
| Generator Sets | 2x shaft generator, approx.. 50kW each, 400 V, |
| Harbour Generator Set | 50 Hz |
| Bilge Pump | Caterpillar C4.4, 64.5 kVA, 400 V, 50 Hz |
| General Service Pumps | Azcue CA-32/05 up to 10 m ³ /h |
| Fuel Oil Pump | 2x Azcue CA-50/3A up to 27 m ³ /h |
| Fuel Oil Filters | Azcue MR-41/10 up to 12.0 m ³ /h |
| Fuel Oil Purifiers | 2x Coalester filters incl. water separator |
| Bilge Water Separator | 2x CJC PTU3 27/81 MZ-E2PWZ, 1920 l/h each |
| Fresh Water Pressure | Facet CPS-2.5 B MK III + EBM14X1, up to 0.5 Set m ³ /h |
| Sewage Treatment | DAB Euroinox 40/50T, 70 l/min, up to 3.0 bar |
| Plant | Selmar Blue Sea Plus 2500 |
| Cooling System | Box cooling and keel cooling + anti-growth |
| Hydraulic System | system Double main engine driven pumps |

FIFI 1 System

| | |
|--------------|---|
| Fifi Set | 2x Main engine driven pump 1200 - 1400 |
| Fifi monitor | m ³ /h 2x 1200 m ³ /h water/foam |

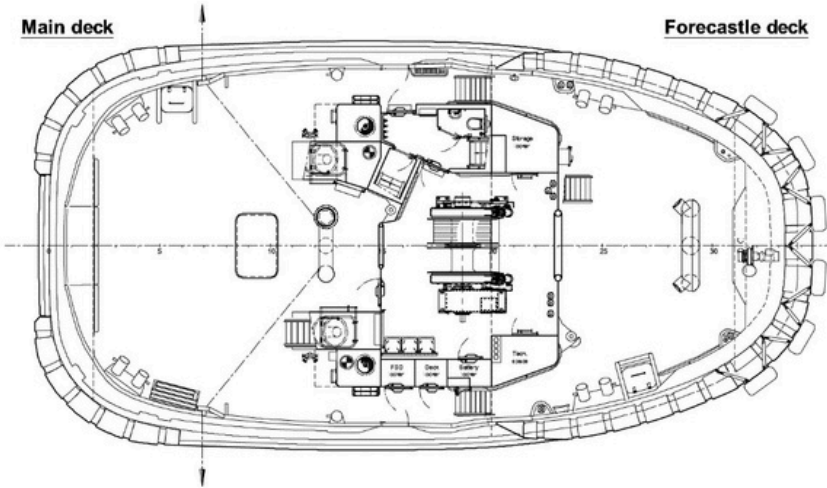
Accommodation

| | |
|-----------------|-----|
| Person | 6 |
| Air Conditioned | Yes |

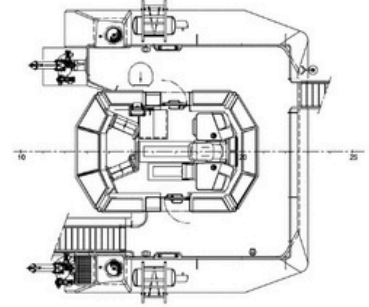


Main deck

Forecastle deck



Bridge deck



Below Main deck

Lower deck

Accommodation deck

